

STREET FRONTAGE PROPOSAL

22 CHRISTOPHER STREET

NEW YORK , NY , 10014

Built during the years 1899 and 1900, this little three-story brick building immediately attracts our attention with its handsome arched windows at the top floor. It was built for Eliza Fishbaum by Higgs & Gavigan and has a modern store front alongside the door giving access to the upper floors. Panels in the brickwork between second and third floor windows create the impression of vertical, brick pilasters. A stepped brick parapet with stone coping now terminates the front wall at the top.

- GREENWICH VILLAGE HISTORIC DISTRICT DESIGNATION REPORT , (p.115)



PRESUMED ORIGINAL FACADE



1940's TAX BLOCK



2018

22 CHRISTOPHER STREET
NEW YORK, NY
10014



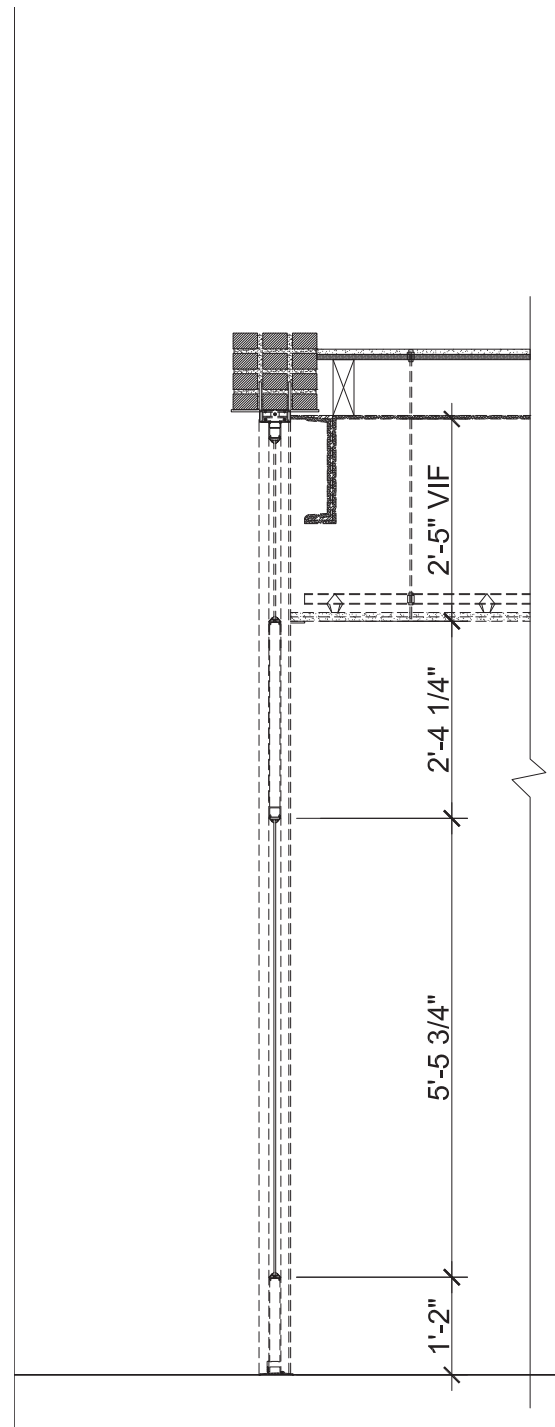
22 CHRISTOPHER STREET
NEW YORK, NY
10014



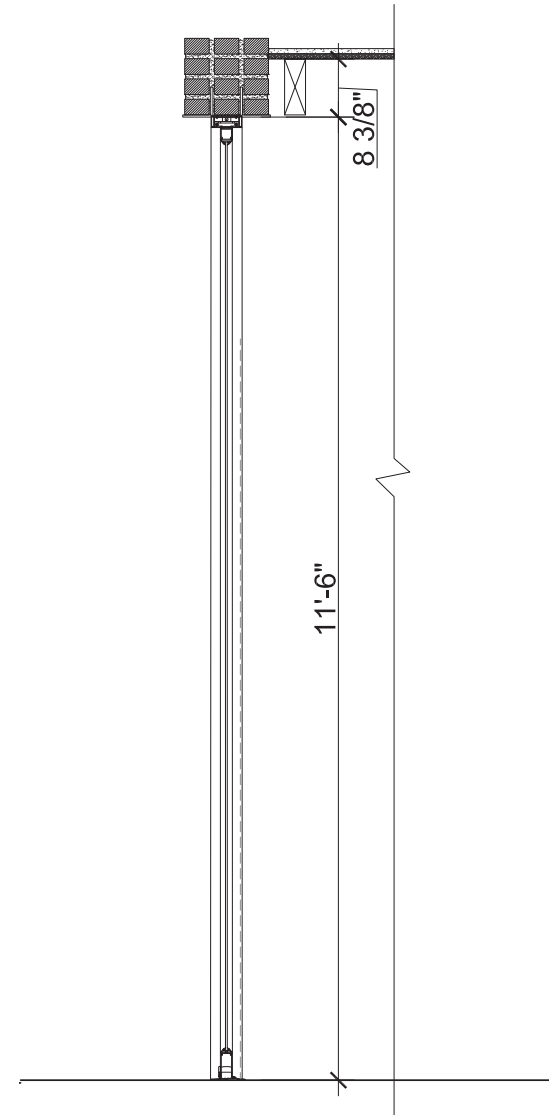
EXISTING CONDITION ELEVATION

PROPOSED CONDITION ELEVATION

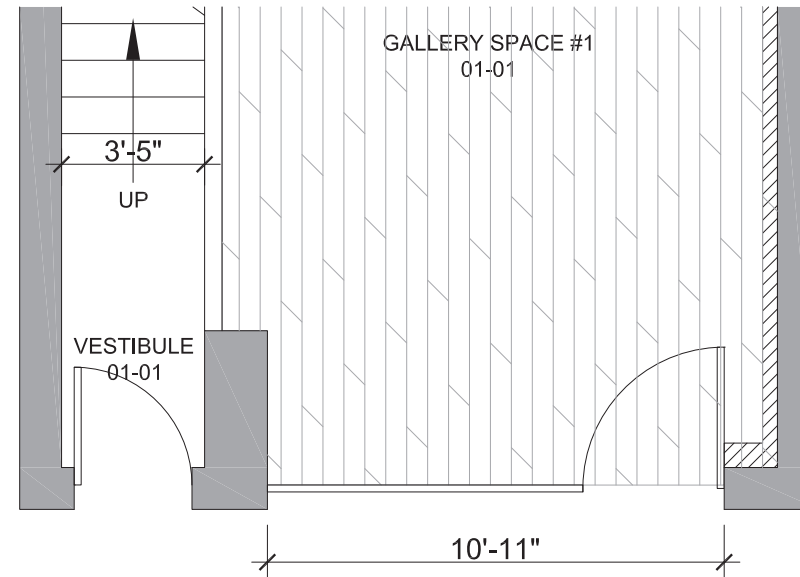
22 CHRISTOPHER STREET
NEW YORK, NY
10014



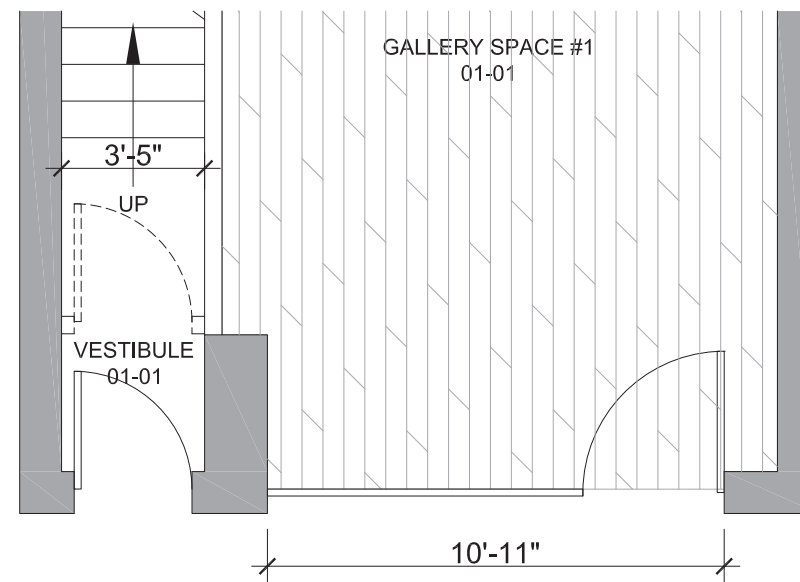
REMOVALS DETAIL SECTION



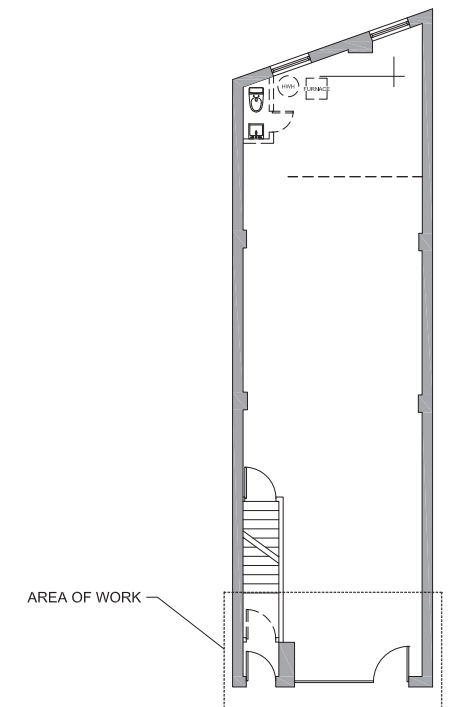
PROPOSED DETAIL SECTION



PROPOSED STOREFRONT PLAN



EXISTING STOREFRONT PLAN



AREA OF WORK